

WILDERNESS SCHOOLING

NOT ALL CLASSROOMS HAVE FOUR WALLS

Wilderness Schooling is an innovative and evidence-based approach to raising attainment by using the outdoor world to bring maths, science and English alive. Wilderness Schooling makes a proven difference to SAT results and emotional wellbeing and is recognised as good practice in child-centred curriculums. **We offer a wide range of programmes and activities delivered by a team of highly experienced teachers and outdoor education practitioners.**



"Wilderness Schooling combines education with play and adventure, and children respond to this with enthusiasm, showing impressive initiative during the schooling whilst developing their communication skills and relationships within the groups."

Dr Toby Quibell,
Wilderness Schooling

Wilderness Schooling: Five Steps to Success

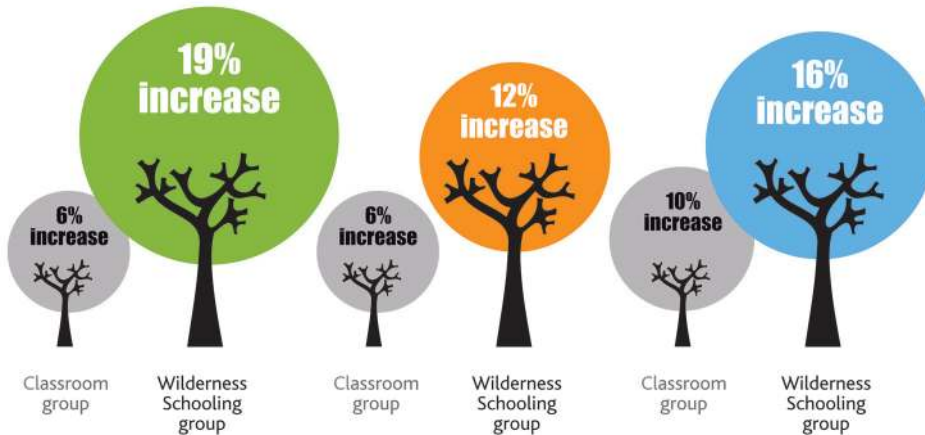




Wilderness Schooling – We have been delivering this programme successfully for over 5 years now, and we have put together something very special. Using our own unique materials in an inspiring outdoor environment, our specialist practitioners will double the rate of academic progress. A big claim but one which we are pleased to back up with published evidence. **Come and discover what all the fuss is about.**

Up to 18 children. 6 days. **£2,900: (<£162 per child)** – Fully staffed by Wilderness Schooling plus one class teacher from your school. Or **£1,865 (<£104 per child)** – Wilderness Schooling Teacher plus one class teacher and one TA from your school. Includes School Outcome Study (see right).

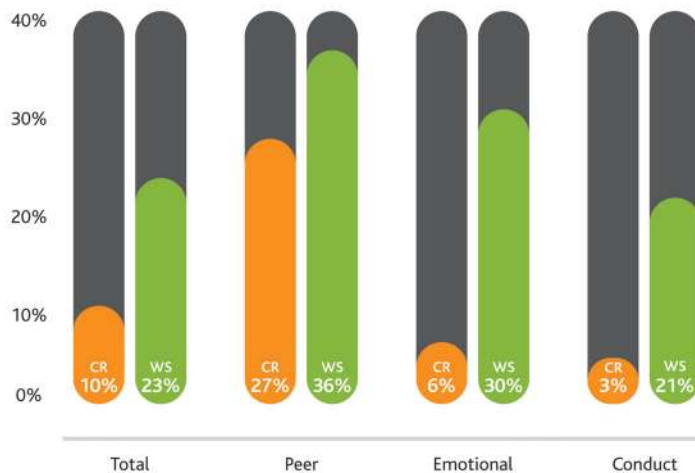
Positive Impact of Wilderness Schooling on Attainment – READING, WRITING AND MATHS



Wilderness Schooling: a controlled trial. Quibell, T. & Charlton, J. (2017) British Educational Research Journal

Positive Impact of Wilderness Schooling on Social and Emotional Well-Being

CR = Classroom, WS = Wilderness Schooling



Wilderness Schooling: Outdoor learning for mental health & well-being in children. Quibell, T. & Charlton, J. (2017) in press

Integrating Outdoor Learning



Wilderness Schooling delivers such a boost to curriculum attainment; it begs to be followed up with more sustained development by bringing Wilderness into your school. We love to see a class teacher re-enthused by the possibilities of learning and this programme is designed to create and sustain space in the packed school day to make new practice stick. Our most experienced **Wilderness Teachers** will be alongside your staff, in class and out, to develop cross-curricula links, quick outdoor learning, lesson planning and measuring outcomes. **Contact us to discuss a bespoke programme.**



Wilderness Social Skills

We pride ourselves on our ability to raise attainment, at the same time we have noticed that the **Wilderness** is a great place to improve social skills. This is a short programme designed to improve social skills, cooperation and confidence in group interactions.

Up to 10 children for 6 days: **£1,977 (<£198 per child)** Wilderness Schooling Teacher plus one TA from your school.



School Outcome Study

For each of the above programmes, we can offer applied social research expertise to gather and present data to the highest levels. The **School Outcome Study** is integral to the delivery of **Wilderness Schooling** and we know how to get your data, how to make sense of it and how to present it to show publication-ready outcomes. **Full study and report: £340**

Becoming a Wilderness School



After participating in one or more **Wilderness Schooling** programmes a school can integrate the benefits of outdoor learning into their core curriculum.

Stage 1. Running a WS Programme:

Your school runs a **WS programme** led by a fully qualified **WS Teacher** and attended by a **WS Trainee teacher** from your school.

Stage 2. Training for WS Trainee:

Training consisting of one day with the **NEW team** at our regular team training days, and two half-days (or twilights) with a senior **WS trainer**.

Stage 3. Supported Practice:

The **WS Trainee** plans and leads a **WS programme** supported by a qualified **WS Teacher** at each of 6 sessions then receives a certificate of qualification. **Contact us to discuss a bespoke programme.**